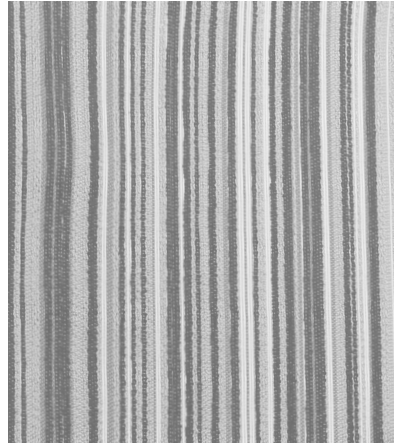


LAUSANNE

GENERAL SPECIFICATIONS

Width	Approx. 57.125"
Weight	16.192 oz/linear yard
Composition	100% Polyester
Backing	Light Acrylic Backing
Finish	Stain Resistant Finish
Repeat	H: 0.063" x V: 7.063"



LAUSANNE- FULL REPEAT

FLAME RETARDANCY SPECIFICATIONS

CAL-TB 117-2013	Passes
UFAC Class 1	Passes

PERFORMANCE SPECIFICATIONS

Abrasion	51,000 DR
Colorfastness to Crocking	Wet: 3 Min Dry: 4 Min
Seam Slippage	Fill: 71 Warp: 43
Tensile Strength	Fill: 281 Warp: 176
Tear Strength	Fill: 32 Warp: 15
Colorfastness to Light	Class 4 Min at 40 Hours
Cleaning Code	WS - Solvent or Spot Clean
Brush Pill	Class 4

RECOMMENDED APPLICATIONS



WORKSPACE



HOSPITALITY



RESTAURANT



SENIOR LIVING



*ACT® Registered Certification Marks