

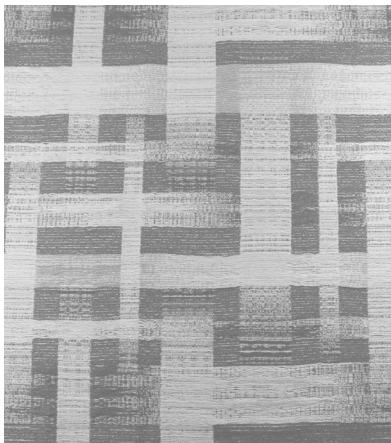
# AMABELLA PLAID

## GENERAL SPECIFICATIONS

Width	Approx. 57.5"
Weight	18.208 oz/linear yard
Composition	46.63% PCR Polyester, 35.25% Polyester, 18.12% Nylon
Backing	Light Acrylic Backing
Finish	Stain Resistant Finish
Railroaded	No
Repeat	H: 14.688" x V: 17.5"

## FLAME RETARDANCY SPECIFICATIONS

CAL-TB 117-2013	Passes
UFAC Class 1	Passes



AMABELLA PLAID - FULL REPEAT

## PERFORMANCE SPECIFICATIONS

Abrasion	63,000 DR
Colorfastness to Crocking	Wet: 3 Min Dry: 4 Min
Seam Slippage	Fill: 47 Warp: 49
Tensile Strength	Fill: 303 Warp: 141
Tear Strength	Fill: 23 Warp: 33
Colorfastness to Light	Class 4 Min at 40 Hours
Cleaning Code	WS - Solvent or Spot Clean
Brush Pill	Class 3
Elongation	Fill: 2.3% Warp: 5%
Colorfastness to Water & Solvents	Water Shade Change: Class 4 Min Staining: Class 3 Min
	Solvent Shade Change: Class 4 Min Staining: Class 3 Min

## RECOMMENDED APPLICATIONS



\*ACT® Registered Certification Marks