



# Brisa<sup>®</sup> | Original



Acoustical properties • Breathable technology



Acoustical



Breathable

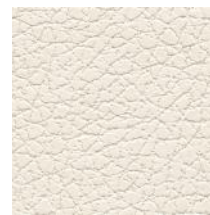


Custom

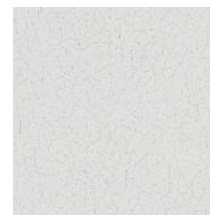
# Brisa® | Original



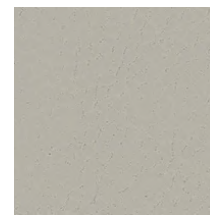
533-1359 Strawberry



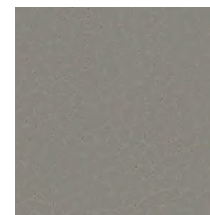
533-5747 White



533-3277 Moon



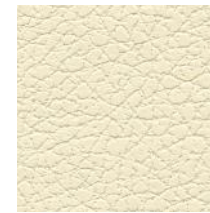
533-3276 Wishbone



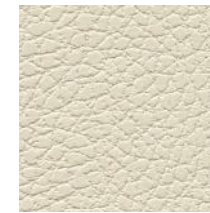
533-3275 Gravel



533-5802 Ash



533-3866 French Vanilla



533-3019 Birch



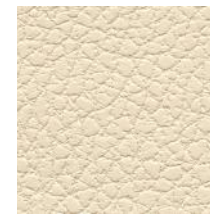
533-3822 Bone



533-3946 New Sand



533-3915 Putty



533-3863 Cream



533-3864 Desert Clay



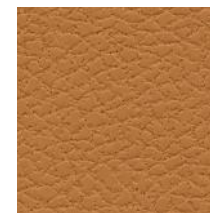
533-3233 Honeycomb



533-3867 Golden



533-3051 Ginger



533-3823 Aztec



533-8202 Koi



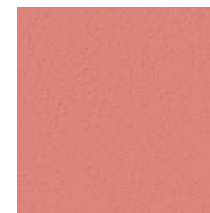
533-8245 Cinnabar



533-3591 Caramel



533-3200 Peat



533-8203 Flamingo



533-1359 Strawberry



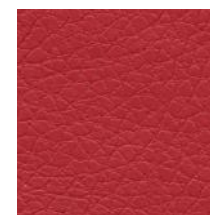
533-1383 Pompeiian Red



533-1373 Salsa



533-3825 Canyon



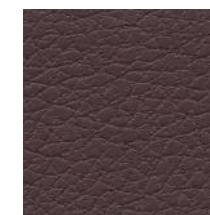
533-1344 Rose Red



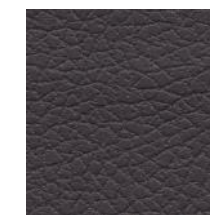
533-1361 Beet Root



533-9374 Blossom



533-9400 Cabernet



533-9378 Abyss



533-3914 Bark



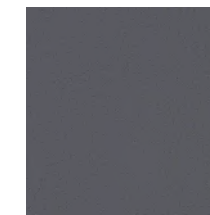
533-3022 Shiitake



533-3913 Truffle



533-3023 Coffee Bean



533-9310 Hazy Lilac





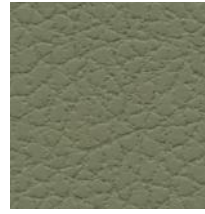
533-5820 Quicksilver



533-3234 Cookie Dough



303-4510 Celery



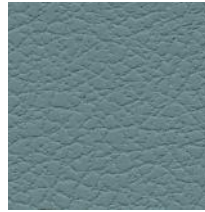
533-4487 Sage



533-4488 Olive



533-2698 Sterling Blue



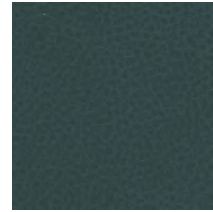
533-2697 Mineral



533-4448 Apple Green



533-4302 Esmeralda



533-4303 Seaweed



533-3272 Iceberg



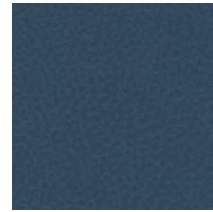
533-2523 Turq



533-2696 Skyway



533-2645 Cambridge Blue



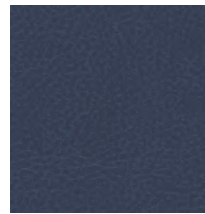
533-2621 Blue Sea



533-5703 Wrought Iron



533-2694 Night Navy



533-2620 Evening Blue



533-2683 Indigo



533-5749 Black Onyx



Acoustical



Breathable



Custom

# Brisa® | Original

## General Specifications

### Composition:

100% Polycarbonate Polyurethane Surface  
65% Polyester, 35% Rayon Backing

### Weight:

Approx. 9.3 oz. Per Square Yard  
Approx. 315 Grams Per Square Metre

### Thickness:

Approx. 1.0 Millimetres

### Width:

54 Inches / 137 Centimetres

## Performance

### Abrasion:

ASTM D4157 / 300,000 Double Rubs (Wyzenbeek)\*  
BS 2543 / 160,000 Rubs (Martindale)\*

\*meets or exceeds

### Hydrolysis:

14+ Weeks  
ASTM D3690-02 Sect. 6.11 (Hydrolytic Stability)  
ISO 1419 Method C (Accelerated Ageing)

### Adhesion of Coating:

ASTM D751

### Tear Strength:

ASTM D2261

### Breaking Strength:

ASTM D5034

### Air Permeability:

ASTM D737

### Sound Absorption:

ASTM C423

## Colorfastness

### Light Fastness:

AATCC 16.3, 200 Hours, Grade 4-5

### Crocking:

AATCC 8, Class 5 Wet & Dry

## Flammability

### F/R Rating:

- ASTM E84 (Adhered) - Class A
- CA TB 117-2013 - Pass
- FMVSS 302 & 95/28 Annex IV - Pass
- NFPA 260 - Class 1
- UFAC - Class 1

### Other Tests\*:

- ASTM E84 (Unadhered)
- BS 5852 PT 0, 1 & 5 (Crib 5)
- BS 5867 Part 2 Type B
- BS 7175
- California Technical Bulletin 133
- FAR Specifications
- IMO A.652 (16)
- NFPA 701

\*These fabrics, when treated and/or used with other compatible furniture components, have been shown to perform well under these fire test conditions.

## Earth Friendly

### • GREENGUARD Certified

- Meets stringent chemical emission limits including hazardous VOCs (ex. Formaldehyde)
- Promotes healthier indoor air quality
- Contributes towards satisfying credits under LEED® and level®, BIFMA

### • Compliant with Prop 65

- No Bisphenol A (BPA)
- No Conflict Minerals
- No Flame Retardants (Halogenated, Brominated: ex. PBDEs)
- No Heavy Metal Stabilizers
- No Plasticizer Phthalates
- No POPs (Persistent Organic Pollutants)
- No PVC (Polyvinyl Chloride)
- No toxic by-products
- Over 99% of solvents recaptured and recycled

For more information on our fabrics, cleaning and care instructions, please visit our website.



PRODUCT  
CERTIFIED FOR  
LOW CHEMICAL  
EMISSIONS:  
UL.COM/IGG  
UL2818

[www.ultrafabricsllc.com](http://www.ultrafabricsllc.com)

Ultrafabrics® and logo, and Brisa® are trademarks of Ultrafabrics Inc. Made in Japan.

7/17

