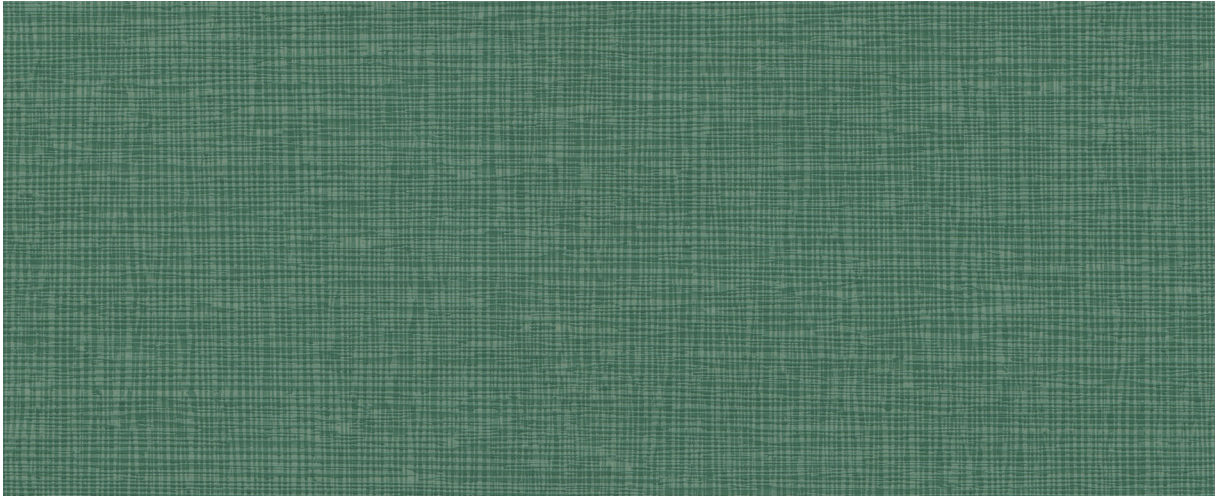


Lino — Uf Select®



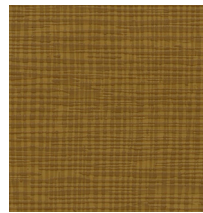
740-43323 Jadite



740-00503 White Marigold



740-65783 Wigwam



740-34463 Cider



740-58733 Coin



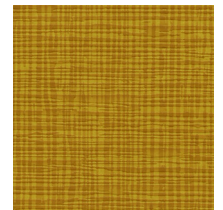
740-34513 Haystack



740-82593 Carrot



740-43373 Pinenut



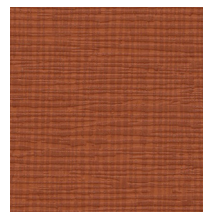
740-82613 Yarrow



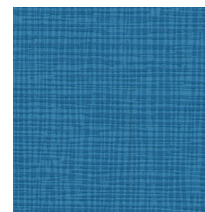
740-50193 Ore



740-33793 Hearth



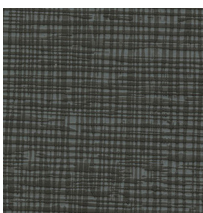
740-82603 Adobe Red



740-25143 Bosphorus



740-43313 Granny Smith



740-50193 Lead



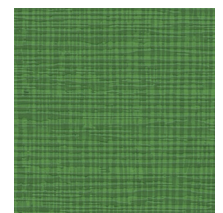
740-34063 Trunk



740-13943 Plum Wine



740-25123 Independence



740-43303 Verde

Lino — Uf Select®

Application Interior Upholstery

General Specifications

Composition Polycarbonate Blended Surface | 65% Polyester, 35% Cotton Backing

Weight Approx. 12.53 oz. Per Square Yard | Approx. 425 Grams Per Square Metre

Thickness Approx. 0.95 Millimetres

Width 54 Inches | 137 Centimetres

Repeat None

Performance

Abrasion ASTM D4157 / 200,000 Double Rubs (Wyzenbeek)* | BS EN ISO 12947-2 / 150,000 Rubs (Martindale)*
*meets or exceeds

Hydrolysis 10 Weeks | ASTM D3690 Sect. 6.11 (Hydrolytic Stability) | ISO 1419 Method C (Accelerated Ageing)

Adhesion of Coating ASTM D751

Tear Strength ASTM D2261

Breaking Strength ASTM D751

Tensile Strength BS EN ISO 1421

Colorfastness

Light AATCC 16.3, 200 Hours, Grade 4 | ISO 105 B02, Grade 6

Crocking AATCC 8, Grade 4-5 Wet & Dry

Flammability Requirements

ASTM E84 (Adhered) - Class A | CA TB 117-2013 - Pass | FMVSS 302 - Pass | NFPA 260 - Class 1 | UFAC - Class 1

These fabrics, when treated and/or used with other compatible furniture components, have been shown to perform under the fire test conditions of:
BS 5852 Source 0, 1 & 5 (Cig, Match & Crib 5) | BS EN 1021 Part 1 & 2 (Cig & Match)

For more information on our fabrics, cleaning and care instructions, please visit our website.